

Developing Technology for Tomorrow's Power Needs.

Denyo

DIESEL ENGINE-DRIVEN DC WELDER/AC GENERATOR

DCW-450S CC/CV



**One Unit for
All Your Welding Needs!**

All-in-one

400A DC Arc Welding Power Source

DCW-450S can perform high-quality welding on pipelines and other welding methods. (Types of welding: Stick, Tig, Mig, Flux-cored, Gouging, etc.)

High-Capacity High-Performance Generator

The unit can also be used as a 20kVA/50Hz or 25kVA/60Hz high-capacity generator. With a voltage regulation of within $\pm 1.0\%$. High-quality AC power can be used while welding is being performed.

Low Fuel Consumption and Long Life

The unit incorporates a low rpm ($1,500/1,800 \text{ min}^{-1}$) high-output diesel engine featuring low fuel consumption. Operation at low speed is easy on the engine, facilitating especially long life.

Special Design Facilitates Use in Virtually Any Location

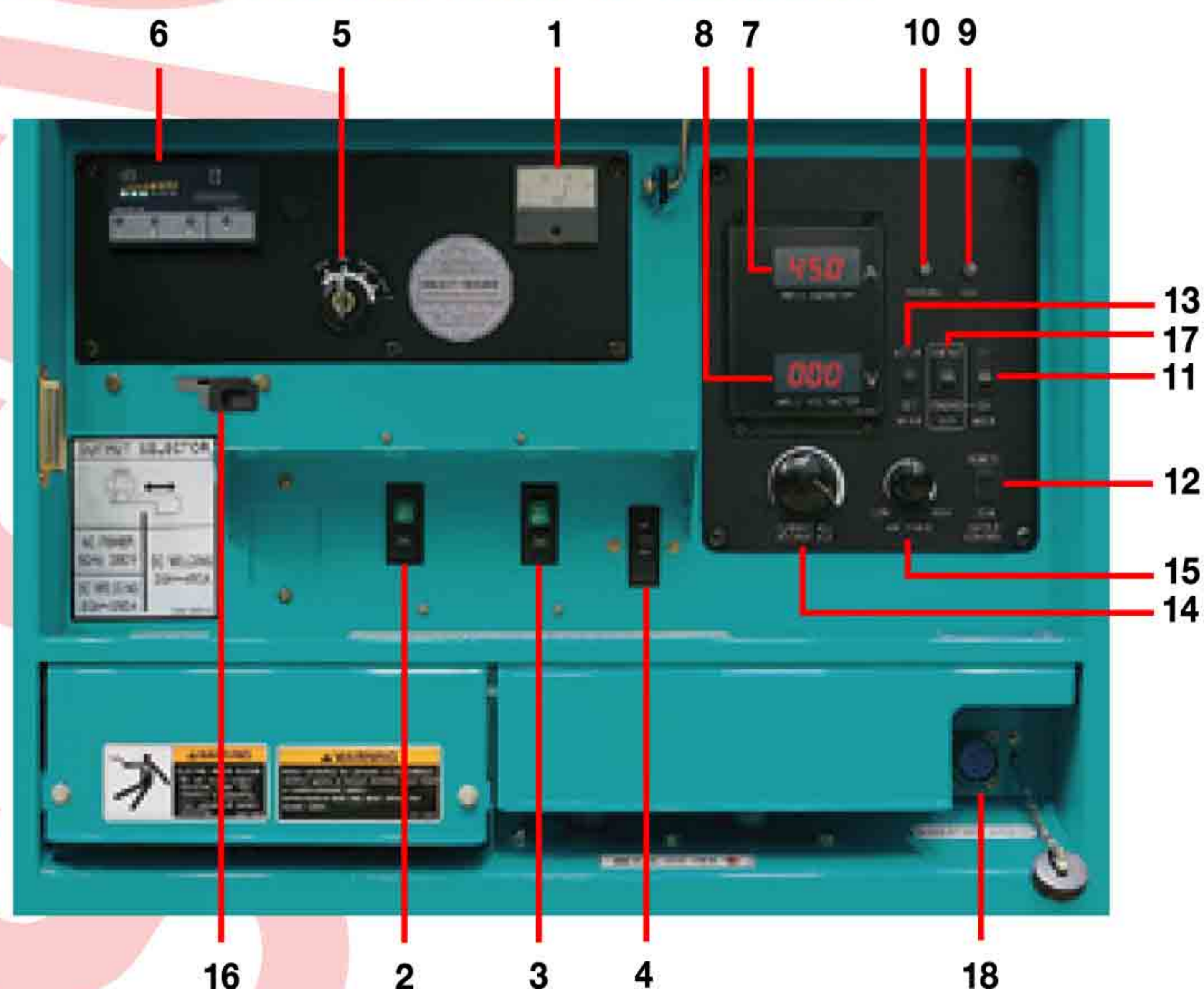
The unit has been designed to operate in virtually all locations, from very hot to cold climates. It is ideal for high-quality welding and as a dependable source of power.

Denyo Co., Ltd.

HIGH PERFORMANCE/Multi-APPLICATION

DCW-450S CC/CV DIESEL ENGINE-DRIVEN DC WELDER/AC GENERATOR

Easy-to-use controls and operation integrated in one location.



Remote Control Unit

CONTROL PANEL

- 1.AC Voltmeter
- 2.Circuit Breaker (3-phase output)
- 3.Circuit Breaker (Welding output)
- 4.Circuit Breaker (Remote output)
- 5.Starter Switch
- 6.Engine Monitor
Warning Lamp Unit
Hour meter
Fuel Meter
- 7.Digital Amps Output Meter
- 8.Digital Volt Output Meter
- 9.VRD Lamp
- 10.Warning Lamp (For Overload)
- 11.Welding Mode Selector (CC/CV)
- 12.Output Control Selector (Remote/Local)
- 13.Meter Selector (Actual/Set)
- 14.Welding Regulator (CC/CV)
- 15.Arc Force Regulator
- 16.Output Range Selector
- 17.OCV Selector (Continue/Synchro)
- 18.Remote Socket

OPTIONS

- OPTION 1**
Frequency Meter
AC Ammeter
- OPTION 2**
Earth Leakage Raley
Ground Terminal (For ELR)
- OPTION 3**
Oil Pressure Gauge
Water Temperature Gauge
- OPTION 4**
Remote Control Unit

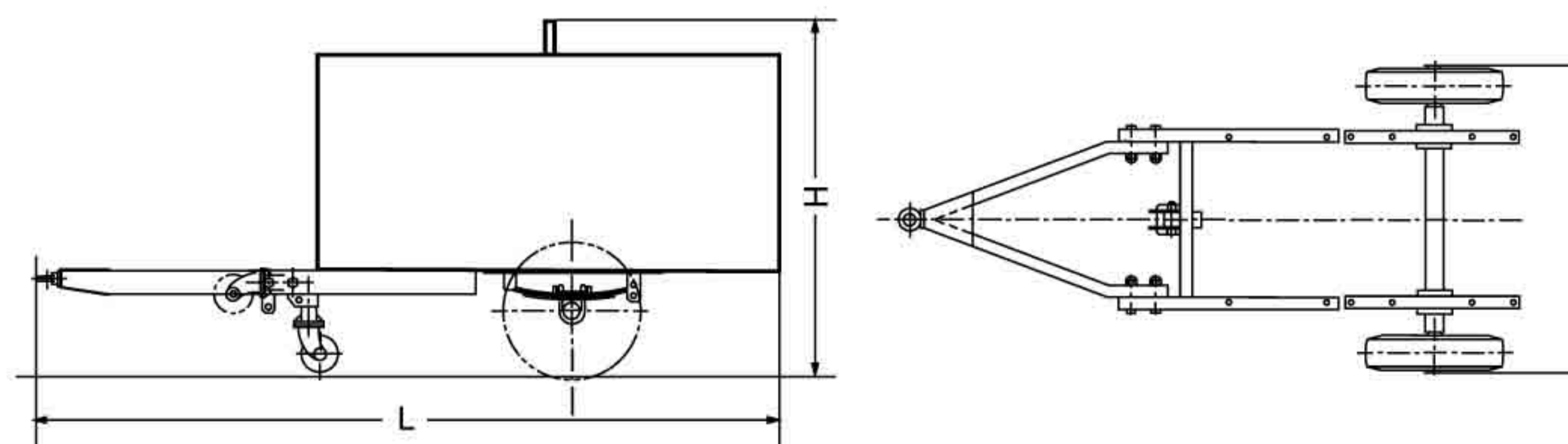
SPECIFICATION

WELDER	MODE	CC MODE	
		Rated output	14.4kW
WELDER	CC MODE	Rated current/Voltage/Duty	400A/36V/60%
		Current range	30A~350A/30A~450A
		Current selector	2 steps
		Current at 100% duty cycle	310A
		Rated speed	1500min ⁻¹ /1800min ⁻¹
	CV MODE	Rated output	13.6kW
		Rated current/Voltage/Duty	400A/34V/60%
		Welding voltage range	14~31.5V/14~36V
		Current at 100% duty cycle	310A
		Rated speed	1500min ⁻¹ /1800min ⁻¹
GENERATOR	Aux.power for feeder		115V
	Number of phases	3-phases,4-wire	
	Rated output	20kVA at 50Hz 25kVA at 60Hz	
	Rated voltage	380V(or 400V or 415V)	
ENGINE	Frequency	50Hz/60Hz	
	Model	kubota V2203	
	Type	4-cycle,water-cooled diesel engine	
	Rated output	18.4kW at 1500min ⁻¹ 23.7kW at 1800min ⁻¹	
	Rated speed	1500min ⁻¹ for 50Hz 1800min ⁻¹ for 60Hz	
	Displacement	2.197L	
	Fuel	ASTM No. 2 diesel fuel or equivalent	
UNIT	Buttery×Quantity	12V-65Ah×1 (80D26R)	
	Dimensions(L×W×H)	1900×720×990mm	
	Dry weight	670kg	

TRAILER (OPTIONS)

	2-Wheel Trailer	4-Wheel Trailer
Length (mm)	3050	3050
Width (mm)	1300	1400
Height (mm)	1435	1415
Dry weight (kg)	770	870
Tire size	5.00 12-8pr	5.00 12-8pr

Dimentions and weight include welding set



Direct inquiries to the nearest Denyo distributor or to Denyo co.,Ltd.



CAT.No.FW05-01-20061222-05 Printed in japan (KP/T)



Head office : 2-8-5,Nihonbashi-horidomecho,Chuo-ku,Tokyo
103-8566,Japan
Tel:+81-3-6861-1111 Fax:+81-3-6861-1181
<http://www.denyo.co.jp>