

NEW!

ENGINE DRIVEN

Vantage[®] 400 CE

Compact, Multi-Process, Excellent Value

The Vantage[®] 400 is one of the most compact 400 amp engine-driven welder/generators in the construction, pipe or rental fleet market today. It's also one of the most quiet, with a smooth running 4-cylinder Perkins[®] diesel engine. Use this multi-process welder for arc gouging with up to 8mm carbons, stick welding with up to 6mm electrodes and CV wire welding with up to 2.4mm wire. You'll value the superior arc performance delivered by Lincoln *CT* Chopper Technology[™]. You'll also appreciate VRD (Voltage Reduction Device), which reduces OCV (open circuit voltage) in the CC-Stick weld mode for added safety.

This model efficiently generates 13,200 watts AC generator power for your lights, grinders and power tools. And, it's housed in a rugged, low maintenance stainless steel enclosure and loaded with many innovative service features. That all totals up to an excellent value!



European model shown

Processes

Stick, TIG, MIG, Flux-cored, Gouging

Advantage Lincoln

- **Compact Case**
 - One of the most compact 400 amp machines available. Suitable for many pickup and service trucks.
- **Stainless Steel Enclosure**
 - Standard stainless steel roof, side panels and engine-access door deliver added protection and durability.
- **Multi-Process Welding, Simple to Operate**
 - Select one of four Process Modes, including CC-Stick (up to 6mm), Downhill Pipe (for stick), Touch-Start[®] DC TIG or CV-Wire (up to 2.4mm⁽¹⁾), and then dial in the desired output.
- **VRD[™] Voltage Reduction Device[™]**
 - Reduced OCV in the CC-Stick weld mode for added safety.
- **Plenty of AC Generator Power**
 - 13.2kw of AC power.
 - Will power industrial equipment such as a plasma cutter, pump or inverter welder.
 - 240 Volt and 415 Volt IP56 rated outlets.

Description



- **Arc Gouging**
 - Arc gouging with up to 8mm carbons.
- **Reliable Engine**
 - 4 cylinder 1500 RPM Perkins diesel engine runs smooth and quiet. Standard engine gauges allow you to monitor performance at a glance.
- **Low Noise**
 - 99.1 dBA Lwa sound power (74.8 dBA at 7m) is one of the quietest 400 amp engine-driven welders available.
- **Innovative Service Access**
 - Lockable, removable sliding engine access door provides ample space for engine and oil filter work without requiring a large clearance space on your truck.
 - Battery drawer on front of machine and top-mounted radiator cover provide convenient access to these systems.
 - Patent-pending tilt down control panel for easy servicing of internal components.
 - Patent-pending radiator cap cover is latched for easy access and is lockable.

⁽¹⁾ 2.4mm E70T-6 up to 260 IPM, 27V

TECHNICAL SPECIFICATIONS

MACHINE SPECIFICATIONS

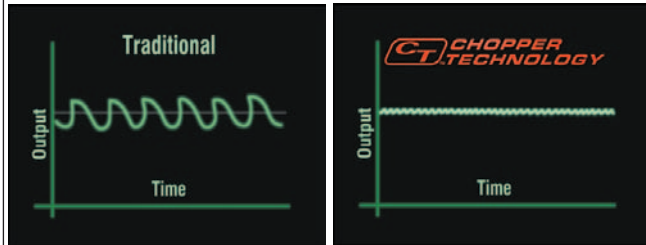
Model	Output Range	Rated Output*	Engine Model	No of Cylinders	HP & Speed (rpm)	Weight Kg	Dimensions H x W x D mm
K2502-2	30 - 400A DC 40 - 300A Pipe	350A/34V @ 100% 400A/30V @ 60% 20-250A DC TIG 14-36 CV	Perkins 404C-22 Diesel	4	28 @ 1500	559	913 x 642 x 1524


PERFORMANCE

Arc Performance

- 350 amps @ 100% duty cycle with output range up to 400 amps using Chopper Technology™. All ratings are at temperatures of 104°F/40°C

WHAT IS CHOPPER TECHNOLOGY?



Patented and award-winning Lincoln  Chopper Technology™ delivers superior DC arc welding performance for general purpose stick, Downhill Pipe, DC TIG, MIG, cored-wire and arc gouging.

Benefits of Chopper Technology™ include:

- Easy arc starting
 - Smooth arc action
 - Low spatter levels
 - Excellent bead appearance
- Arc Gouging with up to a 8mm carbon.
 - VRD (Voltage Reduction Device) reduced OCV (open circuit voltage) in CC-stick welding mode for added safety.

WHAT IS VRD?

The VRD (Voltage Reduction Device) provides additional safety in the CC-Stick weld mode, especially when working in an environment with a higher risk of electrical shock such as wet areas and hot, humid sweaty conditions. The VRD reduces the OCV (open circuit voltage) at the welding output terminals while not welding to less than 32 volts DC.

Indicator lights monitor the voltage: green for less than 32 volts while not welding, and either red (greater than 32 volts) or green while welding, depending on the actual voltage of the arc.

Other weld modes when VRD is on:

- Downhill Pipe** – There is no output.
- CV-Wire** – OCV is not reduced.
- Touch Start TIG** – No difference in operation. TIG is normally a low voltage (less than 32 volts) operation.

- CC-Stick mode is optimized for general purpose stick using E7018 low hydrogen electrode.
- Built-in “hot” start for easier starts and restrikes which minimises the electrode “sticking” to the work.
- Downhill pipe mode with active arc force control. Excellent for cellulosic electrodes. Fast travel speeds, especially on fill passes. Arc control adjustment for a soft, buttery arc or a more forceful digging arc.
- Standard Touch-Start® DC TIG welding, not scratch start, for easy arc starting that avoids tungsten contamination and the use of high-frequency equipment.

WHAT IS TOUCH-START™ TIG?

Touch-Start™ TIG uses a very low voltage to sense when the tip of the tungsten electrode is touched to the work piece. When this occurs, a complete circuit is established. When the tungsten is then raised from the work piece, the circuit senses a change in voltage and initiates the appropriate welding current and voltage to support the TIG welding process.

Enjoy the added benefits of Lincoln's Touch-Start™ TIG when DC TIG welding. Not only do you avoid tungsten contamination when arc starting, but you also don't need extra high frequency equipment.

- Excellent CV wire welding with cored-wire and MIG (CO₂ and blended gas). 2.4mm E70T-6 up to 260 IPM, 27V.

PERFORMANCE

- Simple wire harnessing keeps connections to a minimum for greater reliability. Lead and harness strain reliefs on all control connections help ensure trouble-free performance.
- Engine Protection System includes automatic shutdown for low oil pressure or high engine temperature.
- Indicator light turns on for low oil pressure or high engine temperature. A second indicator light turns on if the engine battery charging system malfunctions.
- Circuit breaker protection on the battery ignition system provides added component protection.
- Environmental friendly engine! Engine has a closed breather system to keep the engine compartment and ground clean. This system eliminates oil mist from collecting inside the engine compartment, especially on surfaces that would lower engine cooling efficiency.
- Self-bleeding engine simplifies startup if your fuel tank runs dry.
- Perkins engine camshaft is gear-driven. No timing belt maintenance.
- Printed circuit boards are environmentally-shielded using Lincoln's engineered potting and protective frame trays.



- Standard stainless steel roof, side panels and engine-access door deliver added protection, durability and corrosion-resistance. Eliminates the need to paint or replace rusting panels.
- Approved by the Canadian Standards Association.
- Manufactured under a quality system certified to ISO 9001 requirements and ISO 14001 environmental standards.
- Three-Year Lincoln Warranty on welder. (Engine is warranted separately by the manufacturer.)

FEATURES



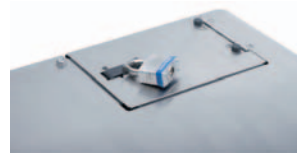
Single-side engine access with lockable sliding door.



Convenient slide-out battery drawer below control panel.



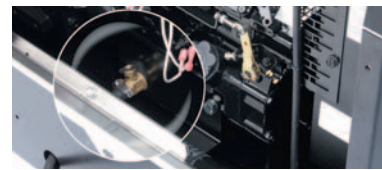
Fuel, Oil Pressure and Engine Temperature gauges help you monitor performance.



Patent-pending latched and lockable radiator cap cover.



Output automatically switches to remote mode when remote device is connected.



Handy oil drain valve and tube makes oil changes easy.

- Simple Controls – Keeps training time to a minimum. The flip-down control panel door keeps less frequently used dials out of the way. Scratch-resistant Lexan® nameplate.
- Digital weld meters for amps and volts output make it easy to precisely set your procedures.
- 57 litre fuel tank provides run time for an extended day—over 12 hours of welding at 250A/34V/100% duty cycle output, or 36 hours at high idle.

- Great Engine Choice - 28 horsepower water-cooled 4 cylinder Perkins 404C-22 diesel engine. Engine has an automatic idler for greater fuel economy and reduced noise.
- Engine hour meter for scheduled maintenance.
- 14-pin connector for Lincoln wire feeders LF-72, LF-74, LN-7, LN-8, LN-15, LN-25, LN-23P and LN-742. Also compatible with Magnum SG Spool Gun System.
- Two Vantage 400 units can be paralleled in the CC-Stick Mode to increase output.

Key Controls



1. Glow Plug Button
2. Weld Mode Selector Switch
3. Run/Stop Switch
4. Hour Meter
5. Start Pushbutton
6. Fuel Level, Engine Temperature and Oil Pressure Gauges
7. Engine Protection Light
8. Engine Battery Charging Light
9. Engine Idler Switch
10. 14-Pin Wire Feeder Connector
11. 6-Pin Remote Control Connector
12. Arc Force & Inductance/Pinch Control Dial
13. Welding Terminals Control Switch
14. Wire Feeder Voltmeter Polarity Switch
15. Digital Amps and Volts Output Meters
16. VRD Indicator Lights
17. Output Control Dial

STICK OPTIONS

Accessory Kit

Includes 10m x 50mm² electrode cable with electrode holder and 9m x 50mm² work cable with work clamp.

Order **K32023-1**



Remote Output Control

Consists of a control box with choice of cable lengths. Permits remote adjustment of output.

Order **K857-8.5-6** 8.5m lead & 6 pin plug
K857-20-6 20m lead & 6 pin plug

WIRE FEEDER OPTIONS

LF-72 Wire Feeder

A heavy-duty semi-automatic wire feeder designed for CV MIG and FCAW welding.

Order **K2327-2** (includes bonus **Magnum 400** gun)

LN-25 Wire Feeder

Portable CC/CV unit for flux-cored and MIG welding. Includes Gas Solenoid & Internal Contactor.

Order **K449A1** includes bonus **K126** gun
K449A2 includes bonus **Magnum[®] 400** gun



Magnum[®] 350 Innershield[®] Gun (for LN-25)

For self-shielded wire with 4.5m cable. For 1.7 - 2.4mm wire.

Order **K126**

Drive Roll and Guide Tube Kit (for LN-25)

For 1.7 - 2.4mm cored or solid steel wire.

Order **KP653-3/32**



PLASMA CUTTING OPTIONS

Pro-Cut[®] 25

Cuts up to 10mm using the 240V AC generator power from the Vantage[®] 400.

Order **WF200116**

Invertec[®] PC65

Cuts up to 20mm using the 415V AC generator power from the Vantage[®] 400.

Order **K12012-2**

TIG OPTIONS

Invertec[®] V205-T AC/DC

For AC TIG welding with square wave performance, use the AC generator of the engine-driven welder to supply the power.

Order **K1855-3**

TIG Module

Provide HF arc starting, post gas flow and output control.

Order **K930-2**

Pro-Torch[®] PTA-26V TIG Torch

Air-cooled 200 amp torch (2 piece) equipped with valve for gas flow control. 7.6m length.

Order **K1783-9**

Foot Amptrol[™]

Provides 7.6m of remote output control for TIG welding. (6 pin plug connection).

Order **K870**

Hand Amptrol[™]

Provides 7.6m of remote current control for TIG welding. (6 pin plug connection). Velcro straps secure torch.

Order **K963-3** (one size fits all **Pro-Torch[™] TIG Torch**)



Medium Welder Trailer

For heavy duty road, off-road, plant and yard applications. Includes wheeled jack, safety chains, 350mm wheels and large rear bumper. Stiff 5mm steel frame, E-coated and powder painted for rust & corrosion resistance. Low sway suspension. E-Z Lube[™] Axle-pack wheel bearings with a grease gun. 1425mm max width.

Order **K953-1** Trailer
K958-1 2" Ball hitch
K958-2 Lunette Eye Hitch
K959-1 Mud guard

CUSTOMER ASSISTANCE POLICY

The business of The Lincoln Electric Company is manufacturing and selling high quality welding equipment, consumables, and cutting equipment. Our challenge is to meet the needs of our customers and to exceed their expectations. On occasion, purchasers may ask Lincoln Electric for advice or information about their use of our products. We respond to our customers based on the best information in our possession at that time. Lincoln Electric is not in a position to warrant or guarantee such advice, and assumes no liability, with respect to such information or advice. We expressly disclaim any warranty of any kind, including any warranty of fitness for any customer's particular purpose, with respect to such information or advice. As a matter of practical consideration, we also cannot assume any responsibility for updating or correcting any such information or advice once it has been given, nor does the provision of information or advice create, expand or alter any warranty with respect to the sale of our products.

Lincoln Electric is a responsive manufacturer, but the selection and use of specific products sold by Lincoln Electric is solely within the control of, and remains the sole responsibility of the customer. Many variables beyond the control of Lincoln Electric affect the results obtained in applying these types of fabrication methods and service requirements.

Subject to Change – This information is accurate to the best of our knowledge at the time of printing.

The Lincoln Electric Company (Australia) Pty Ltd

35 Bryant Street, Padstow, NSW 2211

Ph: 1300 LINCOLN (1300 546 265)

Ph: +61 2 9772 7222

Asia Pacific Head Office

11 Pandan Crescent, Singapore

Ph: +65 6773 6689



THE WELDING EXPERTS[®]

Your local Lincoln distributor is: